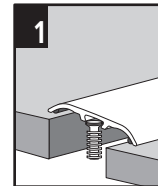
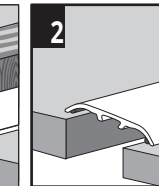
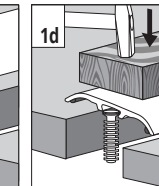
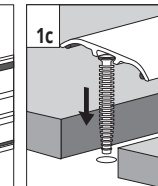
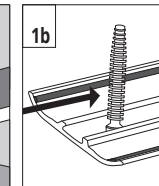
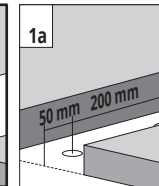


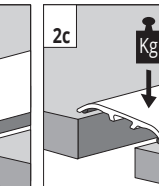
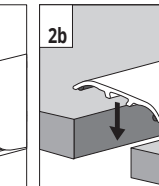
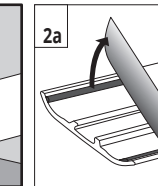
H 40 mm



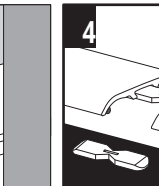
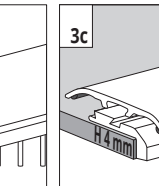
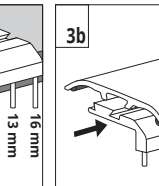
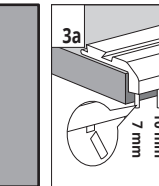
1 - Fissaggio con tassello flessibile, dislivello massimo 27 mm - Fixing with flexible dowel, max slope 27 mm - Fixation avec cheville flexible, différence de niveau de 27 mm maximum - Befestigung mit flexibelen Dübel, max Steigung 27 mm



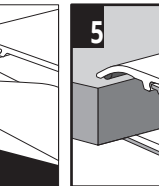
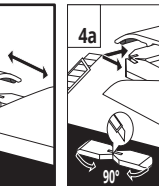
2 - Fissaggio con biadesivo - Fixing with double-sided adhesive tape - Fixation avec bi-adhésif - Befestigung mit beidseitigem Klebeband



3 - Posa perimetrale, supporto con piedini rimovibili - Perimeter lay, support with removable feet - Pose au périmètre, support avec bases amovibles - Äußere Verlegung, Profil mit abnehmbaren Füßchen



4 - Giunzione di raccordo - Junction - Jonction de raccord - Verbinder



5 - Base a schiacciamento - Tap-down base - Base à emboîter - Profixerpresschiene

ATTENZIONE - CAUTION
ATTENTION - VORSICHT

Attenzione: bordi taglienti usare guanti da lavoro
Caution: sharp edges use work gloves

Attention: bords coupants, utiliser des gants adaptés
Vorsicht: scharfe Kanten, Arbeitshandschuhe benutzen

